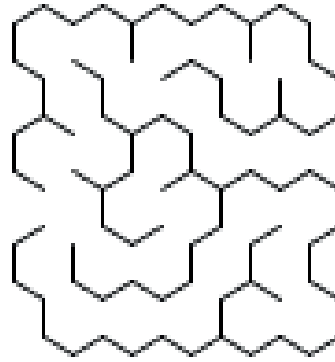


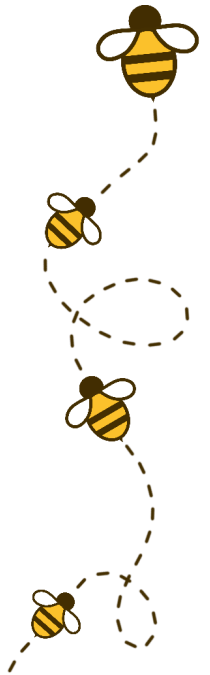


Irish Bee Conservation Project

GUIDE THE BEE TO THE HONEY



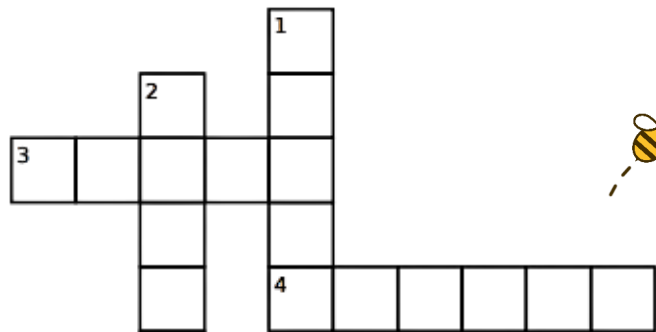
SPOT 5 DIFFERENCES



CROSSWORD

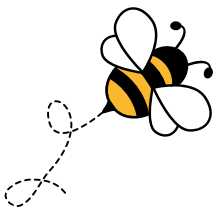
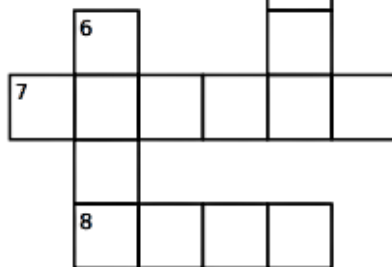
Down:

1. The big boss of the hive, who lays all the eggs.
2. The fine, dusty powder from flowers that bees gather.
5. The home where bees live together in neat little rooms.
6. The hexagon-shaped cells in a hive where honey is stored.



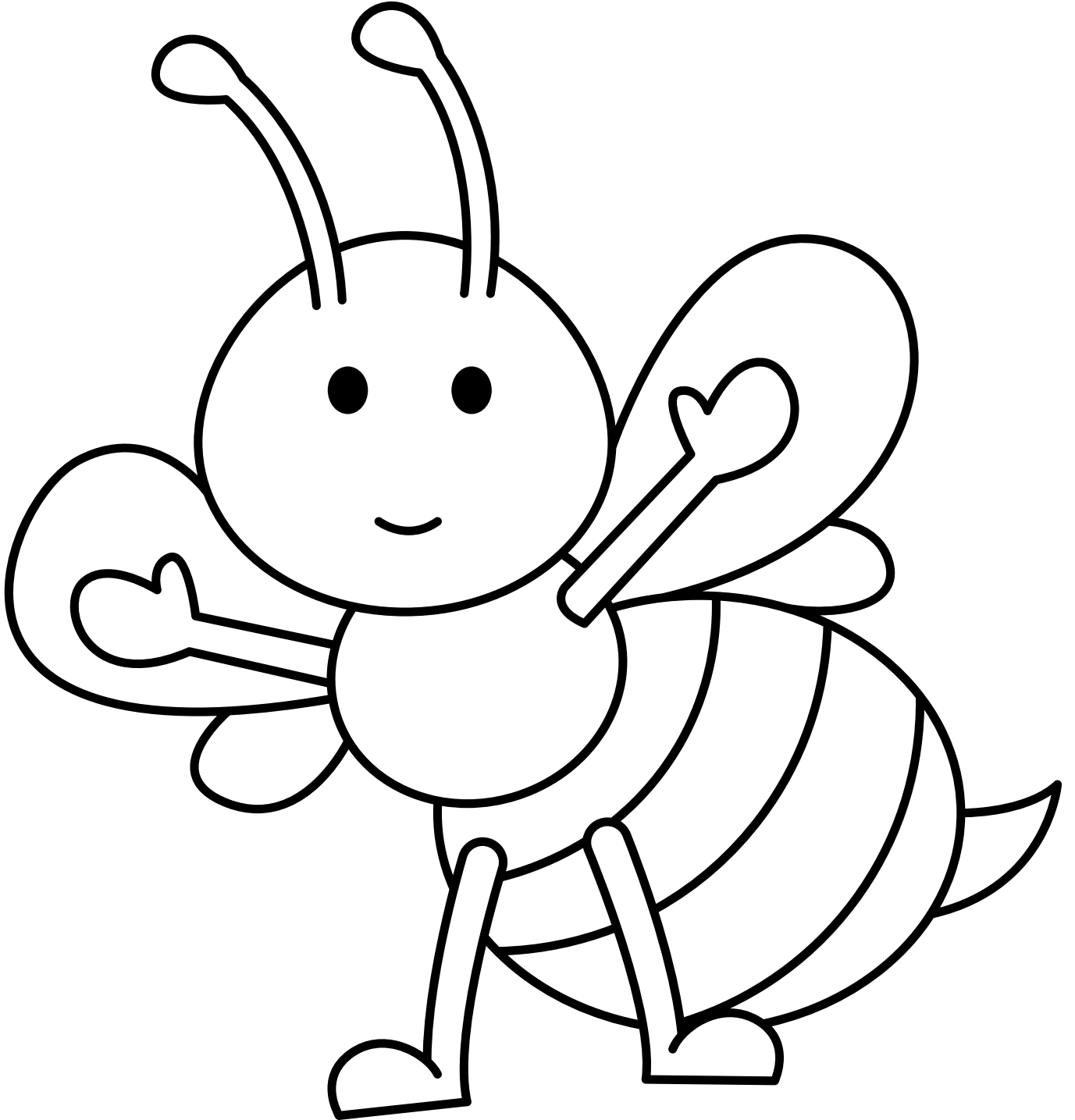
Across:

3. A male bee whose main job is to help the queen.
4. The sweet juice inside flowers that bees turn into honey.
5. The sweet treat that bees make from flower nectar.
7. A busy bee that collects nectar and pollen from flowers.
8. The fun sound you hear when a bee flies by.





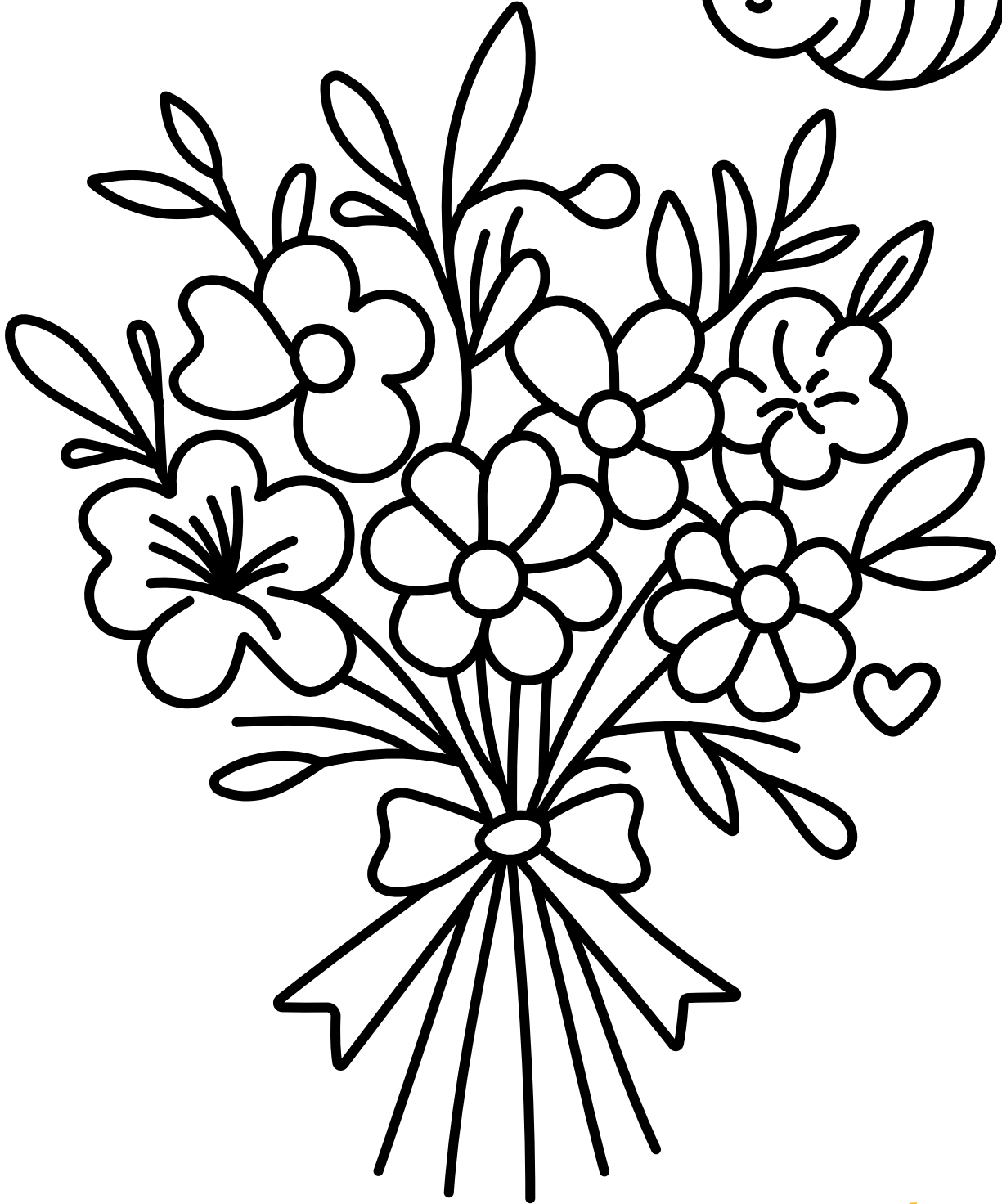
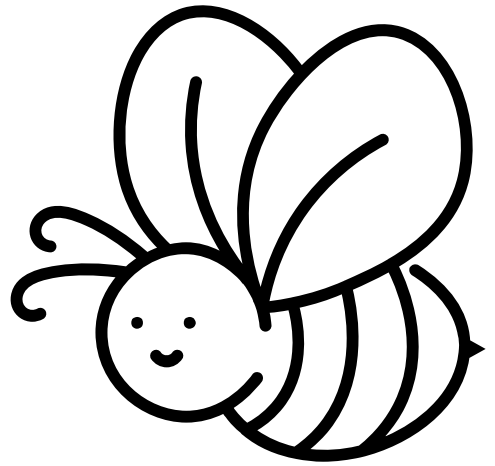
Irish Bee
Conservation
Project



COLOUR ME IN!



Irish Bee
Conservation
Project



COLOUR ME IN!